

SHIMMA



HEIGHT 175 / 5'9" | BUST 86 / 34 / D | WAIST 69 / 27 | HIPS 98 / 38.5" | HAIR BLACK | EYES BROWN | DRESS 12
SHOES 7 AU / 38 EU | CUP DD

kult
AUSTRALIA

SHIMMA



HEIGHT 175 / 5'9" | BUST 86 / 34 / D | WAIST 69 / 27 | HIPS 98 / 38.5" | HAIR BLACK | EYES BROWN | DRESS 12
SHOES 7 AU / 38 EU | CUP DD

kult
AUSTRALIA

SHIMMA



HEIGHT 175 / 5'9" | BUST 86 / 34 / D | WAIST 69 / 27 | HIPS 98 / 38.5" | HAIR BLACK | EYES BROWN | DRESS 12
SHOES 7 AU / 38 EU | CUP DD

kult
AUSTRALIA

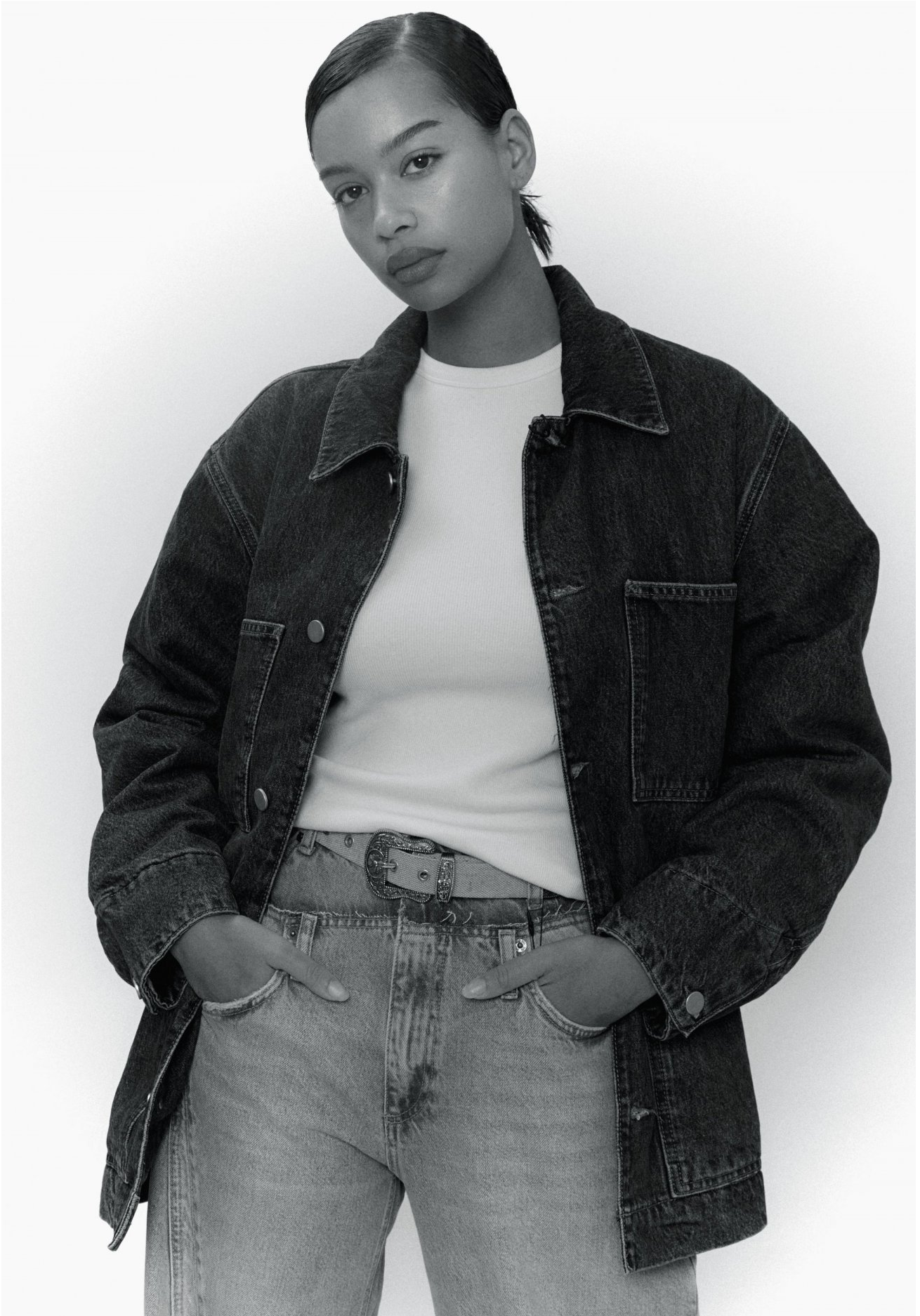
SHIMMA



HEIGHT 175 / 5'9" | BUST 86 / 34 / D | WAIST 69 / 27 | HIPS 98 / 38.5" | HAIR BLACK | EYES BROWN | DRESS 12
SHOES 7 AU / 38 EU | CUP DD

kult
AUSTRALIA

SHIMMA



HEIGHT 175 / 5'9" | BUST 86 / 34 / D | WAIST 69 / 27 | HIPS 98 / 38.5" | HAIR BLACK | EYES BROWN | DRESS 12
SHOES 7 AU / 38 EU | CUP DD

kult
AUSTRALIA

SHIMMA



Sh
Manhattan Ro
Lower East Side, New York Autun

HEIGHT 175 / 5'9" | BUST 86 / 34 / D | WAIST 69 / 27 | HIPS 98 / 38.5" | HAIR BLACK | EYES BROWN | DRESS 12
SHOES 7 AU / 38 EU | CUP DD

kult
AUSTRALIA

SHIMMA



SHIMMA MARE
Wrapped in a blanket, cabin bedroom
Epstate, New York
January 1, 2024 New Years Day

HEIGHT 175 / 5'9" | BUST 86 / 34 / D | WAIST 69 / 27 | HIPS 98 / 38.5" | HAIR BLACK | EYES BROWN | DRESS 12
SHOES 7 AU / 38 EU | CUP DD

kult
AUSTRALIA

SHIMMA



HEIGHT 175 / 5'9" | BUST 86 / 34 / D | WAIST 69 / 27 | HIPS 98 / 38.5" | HAIR BLACK | EYES BROWN | DRESS 12
SHOES 7 AU / 38 EU | CUP DD

kult
AUSTRALIA

SHIMMA



HEIGHT 175 / 5'9" | BUST 86 / 34 / D | WAIST 69 / 27 | HIPS 98 / 38.5" | HAIR BLACK | EYES BROWN | DRESS 12
SHOES 7 AU / 38 EU | CUP DD

kult
AUSTRALIA

SHIMMA



HEIGHT 175 / 5'9" | BUST 86 / 34 / D | WAIST 69 / 27 | HIPS 98 / 38.5" | HAIR BLACK | EYES BROWN | DRESS 12
SHOES 7 AU / 38 EU | CUP DD

kult
AUSTRALIA

SHIMMA



HEIGHT 175 / 5'9" | BUST 86 / 34 / D | WAIST 69 / 27 | HIPS 98 / 38.5" | HAIR BLACK | EYES BROWN | DRESS 12
SHOES 7 AU / 38 EU | CUP DD

kult
AUSTRALIA

SHIMMA



HEIGHT 175 / 5'9" | BUST 86 / 34 / D | WAIST 69 / 27 | HIPS 98 / 38.5" | HAIR BLACK | EYES BROWN | DRESS 12
SHOES 7 AU / 38 EU | CUP DD

kult
AUSTRALIA

SHIMMA

Beauty notes —

Head to toes. To prep face for makeup apply the Estée Lauder Advanced Night Repair Concentrated Recovery PowerFoil mask. Leave for 10 minutes, then massage excess serum into skin. For an even complexion apply Estée Lauder Double Wear Stay-In-Place makeup SPF 10 where needed.

PHOTOGRAPHY Kelly Geddes @ Vivien's Creative
FASHION Natalie Petrevski & Ellen Presbury
MODELS Adrienne Shaul and Shimma @ Kult, Alizee
Coucke @ Priscillas and Cameron Stephens @ IMG
HAIR & MAKEUP Tencille Sorgiovanni @ Lion Artist
Management using Estée Lauder
PHOTOGRAPHER'S ASSISTANT Micaela Mandorff
MAKEUP ASSISTANT Celeste Gubb

HEIGHT 175 / 5'9" | BUST 86 / 34 / D | WAIST 69 / 27 | HIPS 98 / 38.5" | HAIR BLACK | EYES BROWN | DRESS 12
SHOES 7 AU / 38 EU | CUP DD

kult
AUSTRALIA

SHIMMA



HEIGHT 175 / 5'9" | BUST 86 / 34 / D | WAIST 69 / 27 | HIPS 98 / 38.5" | HAIR BLACK | EYES BROWN | DRESS 12
SHOES 7 AU / 38 EU | CUP DD

kult
AUSTRALIA

SHIMMA



HEIGHT 175 / 5'9" | BUST 86 / 34 / D | WAIST 69 / 27 | HIPS 98 / 38.5" | HAIR BLACK | EYES BROWN | DRESS 12
SHOES 7 AU / 38 EU | CUP DD

kult
AUSTRALIA