

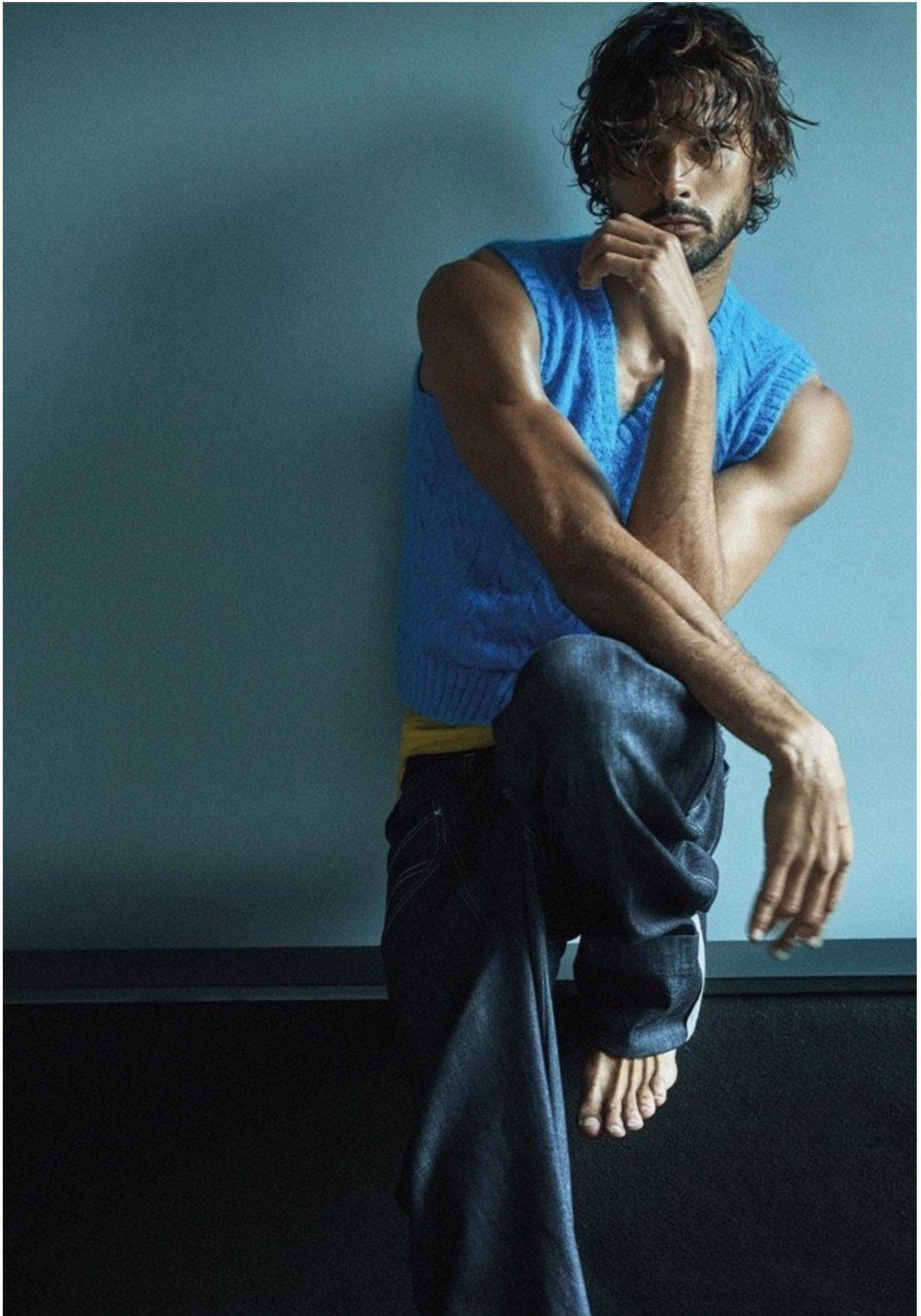
MARLON TEIXEIRA



HEIGHT 188 / 6'2" | CHEST 98 / 38.5 | WAIST 81 / 32 | HAIR BROWN | EYES BROWN | SHOES 44 / 10
SUIT 50 / 40 | COLLAR 40 / 16

kult
AUSTRALIA

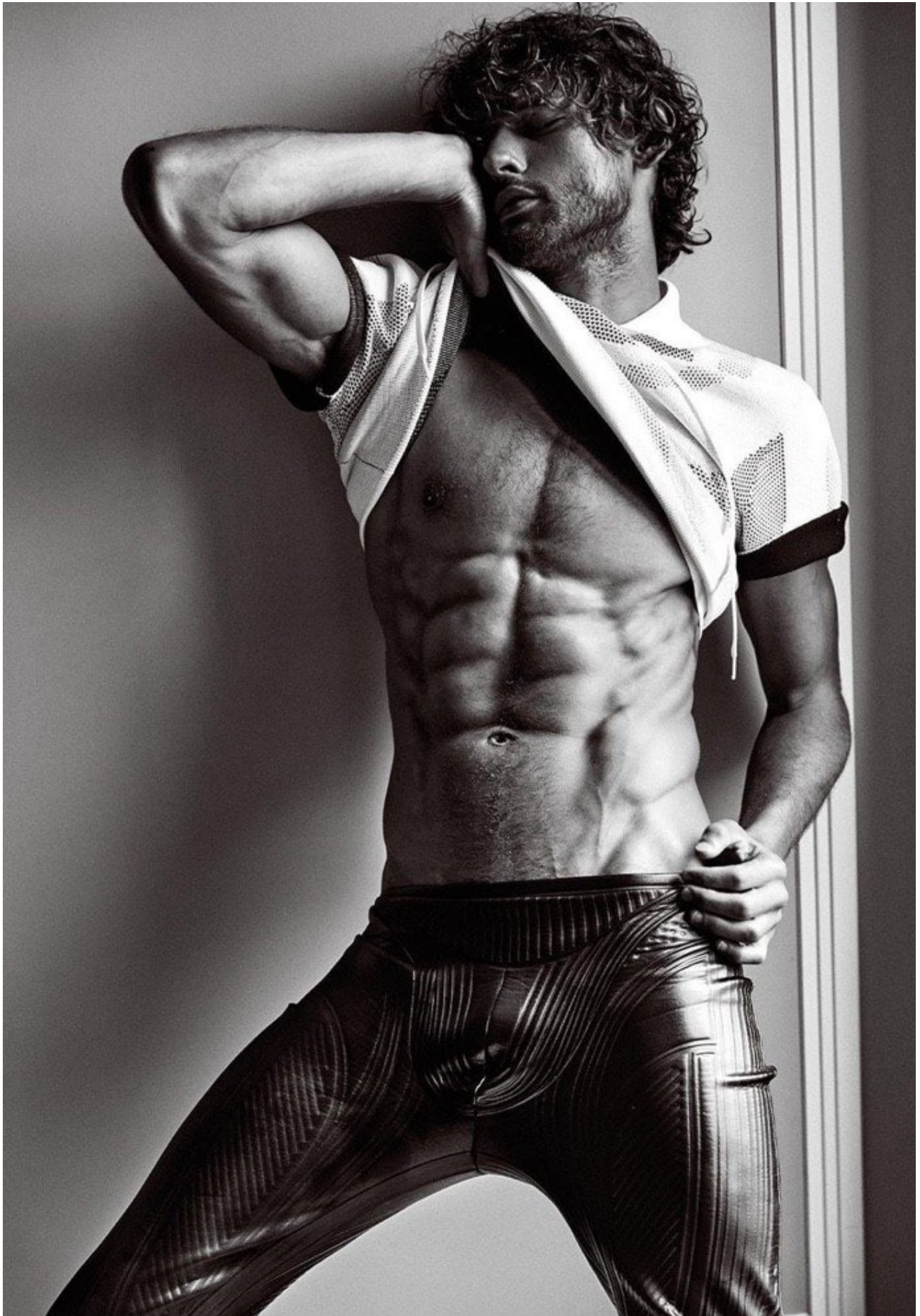
MARLON TEIXEIRA



HEIGHT 188 / 6'2" | CHEST 98 / 38.5 | WAIST 81 / 32 | HAIR BROWN | EYES BROWN | SHOES 44 / 10
SUIT 50 / 40 | COLLAR 40 / 16

kult
AUSTRALIA

MARLON TEIXEIRA



HEIGHT 188 / 6'2" | CHEST 98 / 38.5 | WAIST 81 / 32 | HAIR BROWN | EYES BROWN | SHOES 44 / 10
SUIT 50 / 40 | COLLAR 40 / 16

kult
AUSTRALIA

MARLON TEIXEIRA



HEIGHT 188 / 6'2" | CHEST 98 / 38.5 | WAIST 81 / 32 | HAIR BROWN | EYES BROWN | SHOES 44 / 10
SUIT 50 / 40 | COLLAR 40 / 16

kult
AUSTRALIA

MARLON TEIXEIRA



MAN

ABOUT TOWN

PHOTOGRAPHY BY BARTEK SZMIGULSKI
FASHION CDLP & AMBUSH
AUTUMN/WINTER 2021
£14.95

Marlon
Teixeira



HEIGHT 188 / 6'2" | CHEST 98 / 38.5 | WAIST 81 / 32 | HAIR BROWN | EYES BROWN | SHOES 44 / 10
SUIT 50 / 40 | COLLAR 40 / 16

kult
AUSTRALIA

MARLON TEIXEIRA



HEIGHT 188 / 6'2" | CHEST 98 / 38.5 | WAIST 81 / 32 | HAIR BROWN | EYES BROWN | SHOES 44 / 10
SUIT 50 / 40 | COLLAR 40 / 16

kult
AUSTRALIA

MARLON TEIXEIRA



HEIGHT 188 / 6'2" | CHEST 98 / 38.5 | WAIST 81 / 32 | HAIR BROWN | EYES BROWN | SHOES 44 / 10
SUIT 50 / 40 | COLLAR 40 / 16

kult
AUSTRALIA

MARLON TEIXEIRA



HEIGHT 188 / 6'2" | CHEST 98 / 38.5 | WAIST 81 / 32 | HAIR BROWN | EYES BROWN | SHOES 44 / 10
SUIT 50 / 40 | COLLAR 40 / 16

kult
AUSTRALIA

MARLON TEIXEIRA



HEIGHT 188 / 6'2" | CHEST 98 / 38.5 | WAIST 81 / 32 | HAIR BROWN | EYES BROWN | SHOES 44 / 10
SUIT 50 / 40 | COLLAR 40 / 16

kult
AUSTRALIA

MARLON TEIXEIRA



HEIGHT 188 / 6'2" | CHEST 98 / 38.5 | WAIST 81 / 32 | HAIR BROWN | EYES BROWN | SHOES 44 / 10
SUIT 50 / 40 | COLLAR 40 / 16

kult
AUSTRALIA

MARLON TEIXEIRA



HEIGHT 188 / 6'2" | CHEST 98 / 38.5 | WAIST 81 / 32 | HAIR BROWN | EYES BROWN | SHOES 44 / 10
SUIT 50 / 40 | COLLAR 40 / 16

kult
AUSTRALIA

MARLON TEIXEIRA



HEIGHT 188 / 6'2" | CHEST 98 / 38.5 | WAIST 81 / 32 | HAIR BROWN | EYES BROWN | SHOES 44 / 10
SUIT 50 / 40 | COLLAR 40 / 16

kult
AUSTRALIA

MARLON TEIXEIRA



JC_MAN_AQUA_Mobile_PC03_070.indd 1

24112021 15:04

HEIGHT 188 / 6'2" | CHEST 98 / 38.5 | WAIST 81 / 32 | HAIR BROWN | EYES BROWN | SHOES 44 / 10
SUIT 50 / 40 | COLLAR 40 / 16

kult
AUSTRALIA

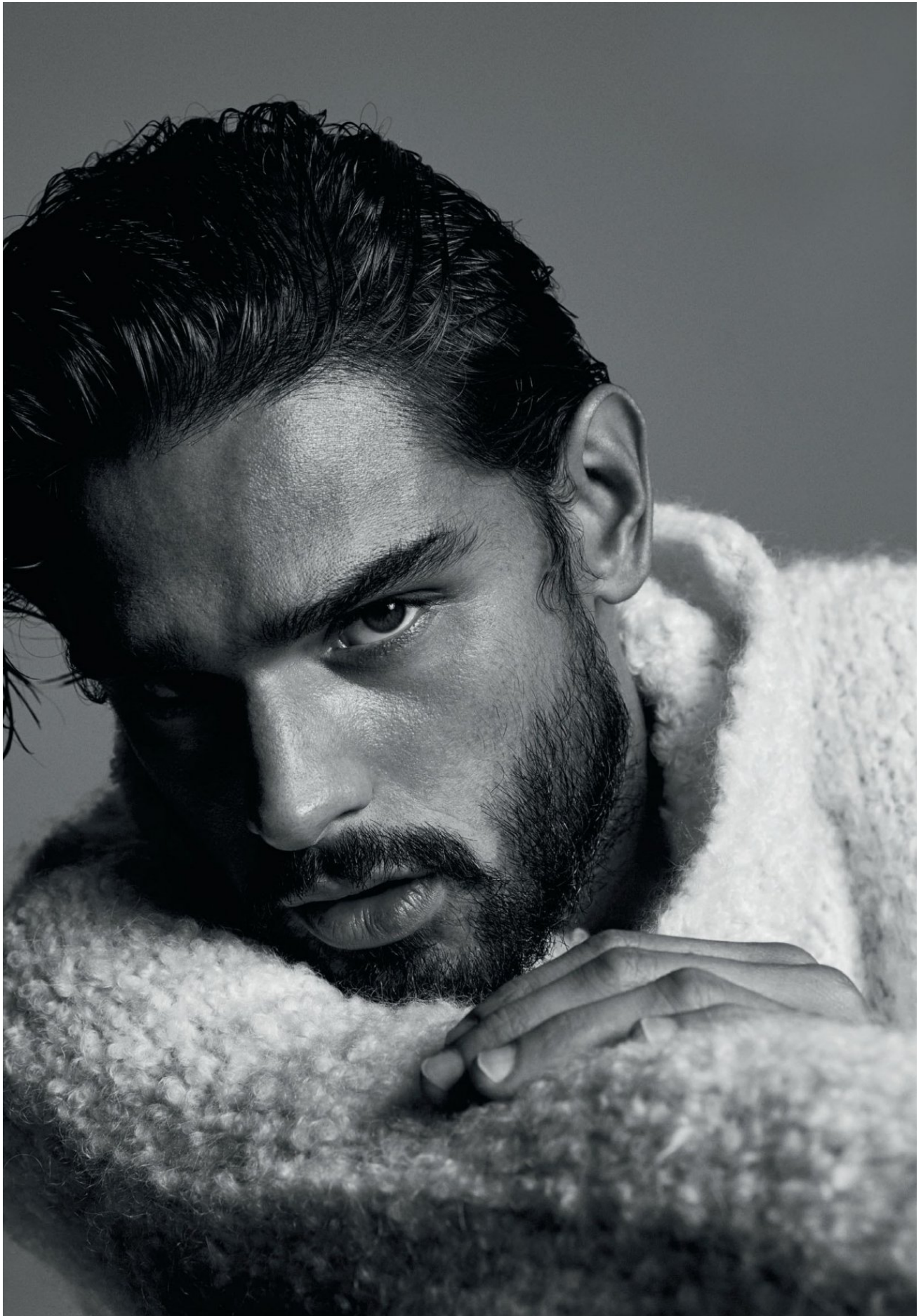
MARLON TEIXEIRA



HEIGHT 188 / 6'2" | CHEST 98 / 38.5 | WAIST 81 / 32 | HAIR BROWN | EYES BROWN | SHOES 44 / 10
SUIT 50 / 40 | COLLAR 40 / 16

kult
AUSTRALIA

MARLON TEIXEIRA



HEIGHT 188 / 6'2" | CHEST 98 / 38.5 | WAIST 81 / 32 | HAIR BROWN | EYES BROWN | SHOES 44 / 10
SUIT 50 / 40 | COLLAR 40 / 16

kult
AUSTRALIA

MARLON TEIXEIRA

Style

POWER

Top Brazilian model turned Sydneysider Marlon Teixeira – aka ‘the male Gisele’ – rugs up in our guide to winter’s hottest trends.

id two

nim, all the time
1 blazer, \$2560, denim
\$850, monk strap
a calf shoes, \$1550, all
siorgio Armani.

WINTER / E

HEIGHT 188 / 6'2" | CHEST 98 / 38.5 | WAIST 81 / 32 | HAIR BROWN | EYES BROWN | SHOES 44 / 10
SUIT 50 / 40 | COLLAR 40 / 16

kult
AUSTRALIA

MARLON TEIXEIRA



C O L D

id one

ized retro suits
astels
: \$1150, trousers, \$630,
shirt, \$150, all from
Piaget Polo automatic
in steel, \$16,300.

S / WINTER

HEIGHT 188 / 6'2" | CHEST 98 / 38.5 | WAIST 81 / 32 | HAIR BROWN | EYES BROWN | SHOES 44 / 10
SUIT 50 / 40 | COLLAR 40 / 16

kult
AUSTRALIA

MARLON TEIXEIRA

Style

YOU MIGHT not know his name, but Marlon Teixeira's 665,000 Instagram followers certainly do. The ripped Brazilian model is spending winter in Australia hanging out with his new girlfriend, singer and socialite Cheyenne Jackson, whom he met in Paris through fellow model Jordan Barrett. "I don't know if I met Jordan in Costa Rica or I met him in Mustique?" says Teixeira after he calls up to our shoot in a silver Range Rover Velar SE. "We've done a lot of jobs together ... and he introduced me to my girl." The 26-year-old is considered an industry veteran after he was discovered on the beaches of Santa Catarina as a model. "I didn't ever expect I would be a model ... if I had my friends I wanted to be a model they would have probably picked me in my face," he jokes. When he turned 16, Teixeira went from Sao Paulo to Sydney without a word of English, and signed an exclusive contract with Christian Dior on his very first casting. Soon after, Giorgio Armani hand-picked him to star in a campaign which led to high-profile deals with luxury brands such as Dolce & Gabbana, Roberto Cavalli, Jean Paul Gaultier, and Balmain. "I had never heard of these brands, I was a 16-year-old from the south of Brazil, even my mum had never heard of these brands," he says. Teixeira reveals surviving cancer as a child changed his life forever. "I had a tumour the size of an orange in the middle of my heart and I did five years of chemotherapy, so that's why I'm so skinny," he says. Not that his impressive physique comes without maintenance. "I'm a very active guy, I like to skate, I like to surf, I like to run ... I have a very fast metabolism, so I can eat a lot." With his laid-back style and beach-bum attitude, Teixeira will fit right in around Cronulla, where he is currently filming. "I try to be the same boy as when I first started modelling," he says. "I can't pretend to be anything else."



Trend five

Winter whites and corduroy
Jacket, POA, trousers, from
\$1075, skivvy, from \$655
all from Ermenegildo Zegna
Hublot Classic Fusion Rap
Grey watch, \$9900.

WINTER / E

HEIGHT 188 / 6'2" | CHEST 98 / 38.5 | WAIST 81 / 32 | HAIR BROWN | EYES BROWN | SHOES 44 / 10
SUIT 50 / 40 | COLLAR 40 / 16

kult
AUSTRALIA

MARLON TEIXEIRA

Trend six

New-look leather
and tonal colours

Callisto jacket, \$4949, Carli
shorts, \$3649, both from
BOSS; Calibre sneakers, \$319.

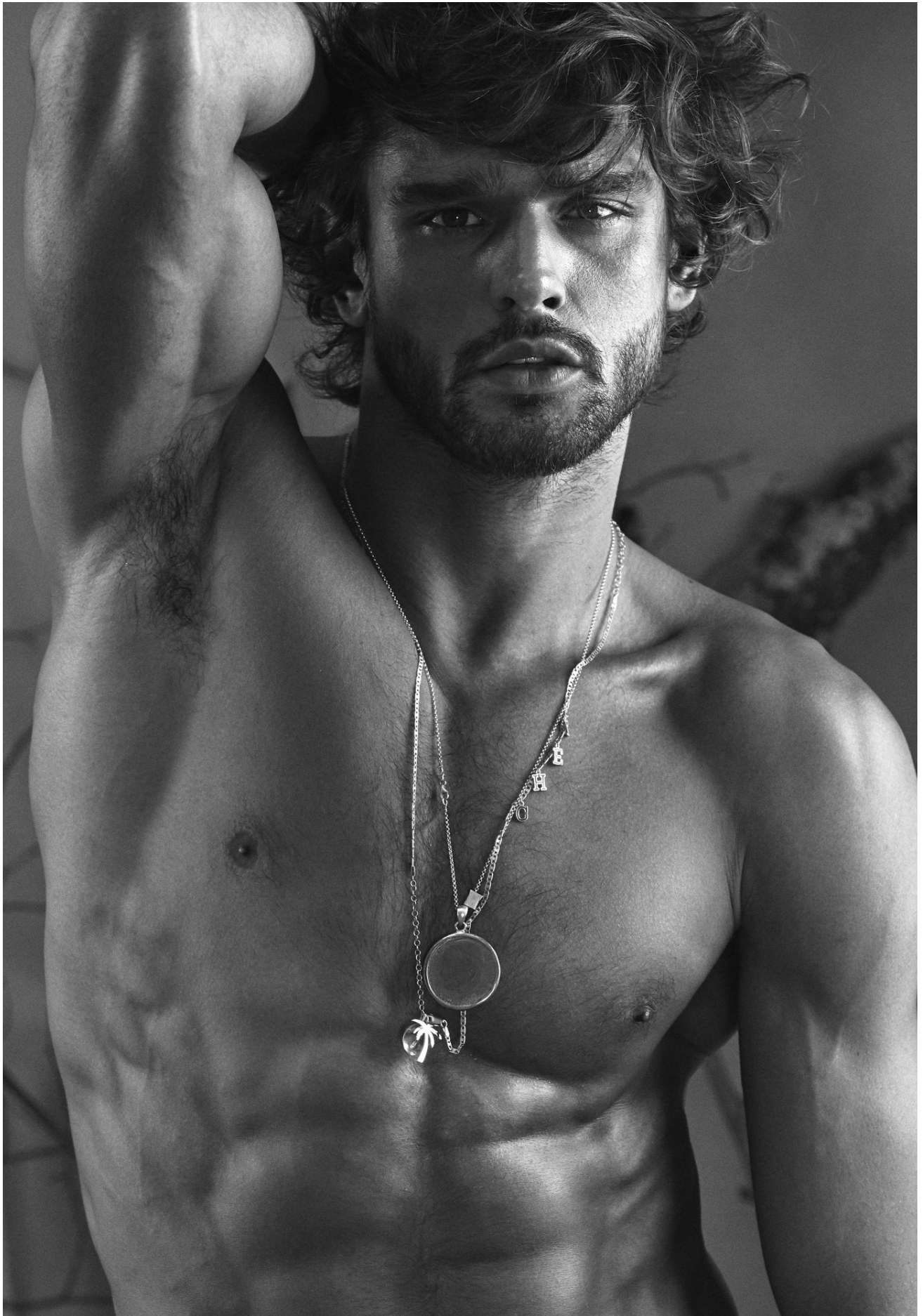


S / WINTER

HEIGHT 188 / 6'2" | CHEST 98 / 38.5 | WAIST 81 / 32 | HAIR BROWN | EYES BROWN | SHOES 44 / 10
SUIT 50 / 40 | COLLAR 40 / 16

kult
AUSTRALIA

MARLON TEIXEIRA



HEIGHT 188 / 6'2" | CHEST 98 / 38.5 | WAIST 81 / 32 | HAIR BROWN | EYES BROWN | SHOES 44 / 10
SUIT 50 / 40 | COLLAR 40 / 16

kult
AUSTRALIA

MARLON TEIXEIRA



HEIGHT 188 / 6'2" | CHEST 98 / 38.5 | WAIST 81 / 32 | HAIR BROWN | EYES BROWN | SHOES 44 / 10
SUIT 50 / 40 | COLLAR 40 / 16

kult
AUSTRALIA

MARLON TEIXEIRA



HEIGHT 188 / 6'2" | CHEST 98 / 38.5 | WAIST 81 / 32 | HAIR BROWN | EYES BROWN | SHOES 44 / 10
SUIT 50 / 40 | COLLAR 40 / 16

kult
AUSTRALIA

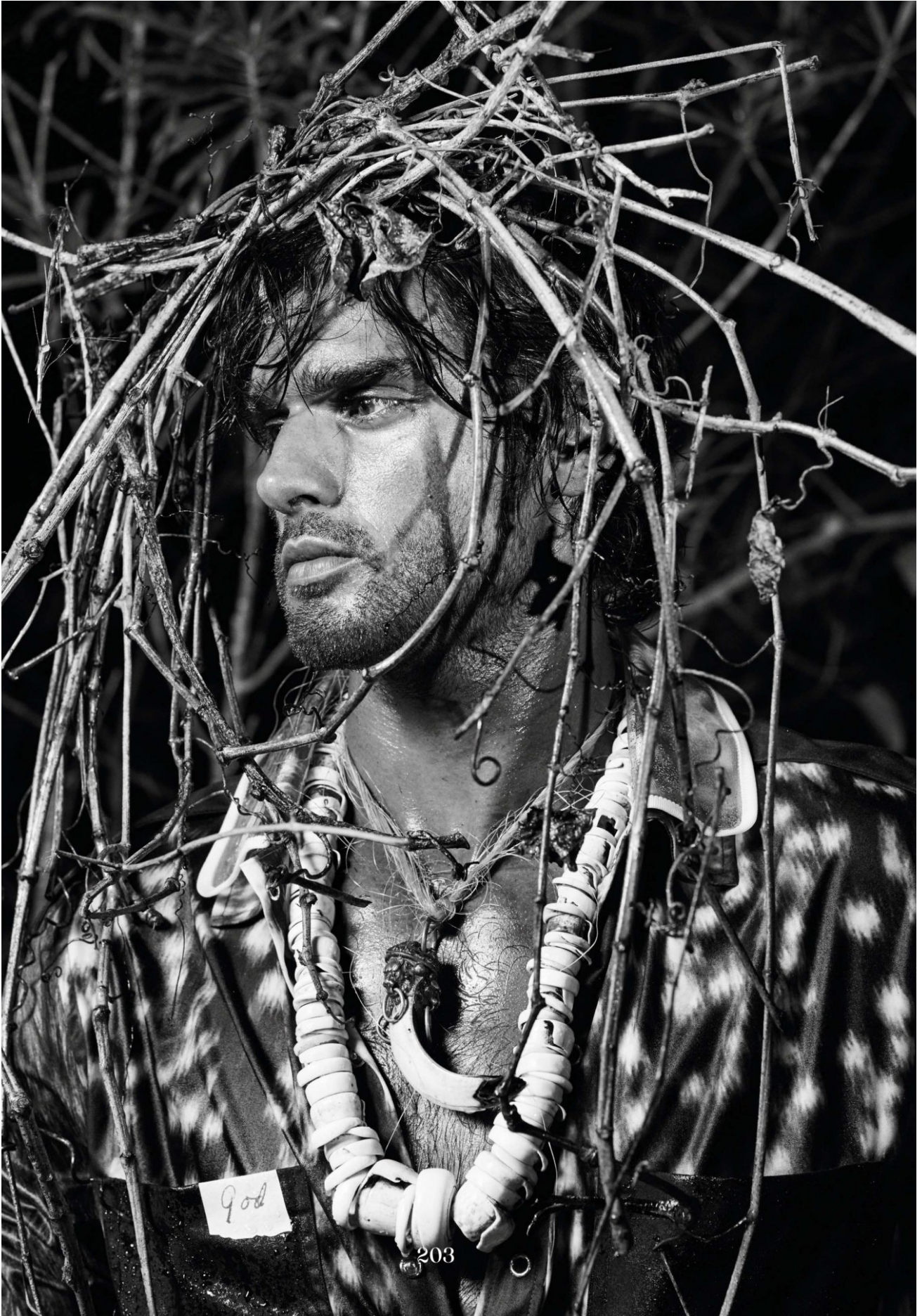
MARLON TEIXEIRA



HEIGHT 188 / 6'2" | CHEST 98 / 38.5 | WAIST 81 / 32 | HAIR BROWN | EYES BROWN | SHOES 44 / 10
SUIT 50 / 40 | COLLAR 40 / 16

kult
AUSTRALIA

MARLON TEIXEIRA



HEIGHT 188 / 6'2" | CHEST 98 / 38.5 | WAIST 81 / 32 | HAIR BROWN | EYES BROWN | SHOES 44 / 10
SUIT 50 / 40 | COLLAR 40 / 16

kult
AUSTRALIA

MARLON TEIXEIRA



205

HEIGHT 188 / 6'2" | CHEST 98 / 38.5 | WAIST 81 / 32 | HAIR BROWN | EYES BROWN | SHOES 44 / 10
SUIT 50 / 40 | COLLAR 40 / 16

kult
AUSTRALIA

MARLON TEIXEIRA



HEIGHT 188 / 6'2" | CHEST 98 / 38.5 | WAIST 81 / 32 | HAIR BROWN | EYES BROWN | SHOES 44 / 10
SUIT 50 / 40 | COLLAR 40 / 16

kult
AUSTRALIA

MARLON TEIXEIRA

VOGUE HOMMES

PHOTOGRAPHE Ethan James GREEN
RÉALISATION
Anastasia BARBIERI

JUNGLE

*Chemise et pantalon
en serpent d'eau*
HERMÈS

Gilet en laine et coton
MORATOIRE
*Chapeau vintage
en paille*
COQUI COQUI
OFICIOS
ARTESANOS

*Sur toutes les
photographies:*
Bracelet
COQUI COQUI
OFICIOS
ARTESANOS

HEIGHT 188 / 6'2" | CHEST 98 / 38.5 | WAIST 81 / 32 | HAIR BROWN | EYES BROWN | SHOES 44 / 10
SUIT 50 / 40 | COLLAR 40 / 16

kult
AUSTRALIA

MARLON TEIXEIRA



VOGUE HOMMES

197

HEIGHT 188 / 6'2" | CHEST 98 / 38.5 | WAIST 81 / 32 | HAIR BROWN | EYES BROWN | SHOES 44 / 10
SUIT 50 / 40 | COLLAR 40 / 16

kult
AUSTRALIA

MARLON TEIXEIRA



HEIGHT 188 / 6'2" | CHEST 98 / 38.5 | WAIST 81 / 32 | HAIR BROWN | EYES BROWN | SHOES 44 / 10
SUIT 50 / 40 | COLLAR 40 / 16

kult
AUSTRALIA

MARLON TEIXEIRA



Blazer brodé
BRIONI
Pantalon en coton
brut et pendentif
en corne
COQUI COQUI
OFICIOS
ARTESANOS
Ceinture en corde
HACIENDA
MONTAECRISTO

À droite :
Pantalon en
jersey
VALENTINO

HEIGHT 188 / 6'2" | CHEST 98 / 38.5 | WAIST 81 / 32 | HAIR BROWN | EYES BROWN | SHOES 44 / 10
SUIT 50 / 40 | COLLAR 40 / 16

kult
AUSTRALIA

MARLON TEIXEIRA



HEIGHT 188 / 6'2" | CHEST 98 / 38.5 | WAIST 81 / 32 | HAIR BROWN | EYES BROWN | SHOES 44 / 10
SUIT 50 / 40 | COLLAR 40 / 16

kult
AUSTRALIA

MARLON TEIXEIRA



HEIGHT 188 / 6'2" | CHEST 98 / 38.5 | WAIST 81 / 32 | HAIR BROWN | EYES BROWN | SHOES 44 / 10
SUIT 50 / 40 | COLLAR 40 / 16

kult
AUSTRALIA

MARLON TEIXEIRA



coat and pants, ERMENEGILDO ZEGNA boots, PRADA

HEIGHT 188 / 6'2" | CHEST 98 / 38.5 | WAIST 81 / 32 | HAIR BROWN | EYES BROWN | SHOES 44 / 10
SUIT 50 / 40 | COLLAR 40 / 16

kult
AUSTRALIA

MARLON TEIXEIRA



JIMMY CHOO MAN

THE FRAGRANCE FOR MEN

HEIGHT 188 / 6'2" | CHEST 98 / 38.5 | WAIST 81 / 32 | HAIR BROWN | EYES BROWN | SHOES 44 / 10
SUIT 50 / 40 | COLLAR 40 / 16

kult
AUSTRALIA

MARLON TEIXEIRA



HEIGHT 188 / 6'2" | CHEST 98 / 38.5 | WAIST 81 / 32 | HAIR BROWN | EYES BROWN | SHOES 44 / 10
SUIT 50 / 40 | COLLAR 40 / 16

kult
AUSTRALIA

MARLON TEIXEIRA

Chaqueta y pantalones BALMAIN
Zapatos MARINA ISLA



HEIGHT 188 / 6'2" | CHEST 98 / 38.5 | WAIST 81 / 32 | HAIR BROWN | EYES BROWN | SHOES 44 / 10
SUIT 50 / 40 | COLLAR 40 / 16

kult
AUSTRALIA

MARLON TEIXEIRA



HEIGHT 188 / 6'2" | CHEST 98 / 38.5 | WAIST 81 / 32 | HAIR BROWN | EYES BROWN | SHOES 44 / 10
SUIT 50 / 40 | COLLAR 40 / 16

kult
AUSTRALIA

MARLON TEIXEIRA

En esta página y en la siguiente:
Chaqueta y pantalones DSQUARED2
Arnés ZANA BAYNE
Zapatos MARINA ISLA



HEIGHT 188 / 6'2" | CHEST 98 / 38.5 | WAIST 81 / 32 | HAIR BROWN | EYES BROWN | SHOES 44 / 10
SUIT 50 / 40 | COLLAR 40 / 16

kult
AUSTRALIA

MARLON TEIXEIRA



HEIGHT 188 / 6'2" | CHEST 98 / 38.5 | WAIST 81 / 32 | HAIR BROWN | EYES BROWN | SHOES 44 / 10
SUIT 50 / 40 | COLLAR 40 / 16

kult
AUSTRALIA

MARLON TEIXEIRA



Stephanie
Crocodile skirt and
wool top Alaïa
Lace bra La Perla
@Journelle

Marlon
Wool jacket and roll
neck sweater Ralph
Lauren
Purple Label

HEIGHT 188 / 6'2" | CHEST 98 / 38.5 | WAIST 81 / 32 | HAIR BROWN | EYES BROWN | SHOES 44 / 10
SUIT 50 / 40 | COLLAR 40 / 16

kult
AUSTRALIA

MARLON TEIXEIRA



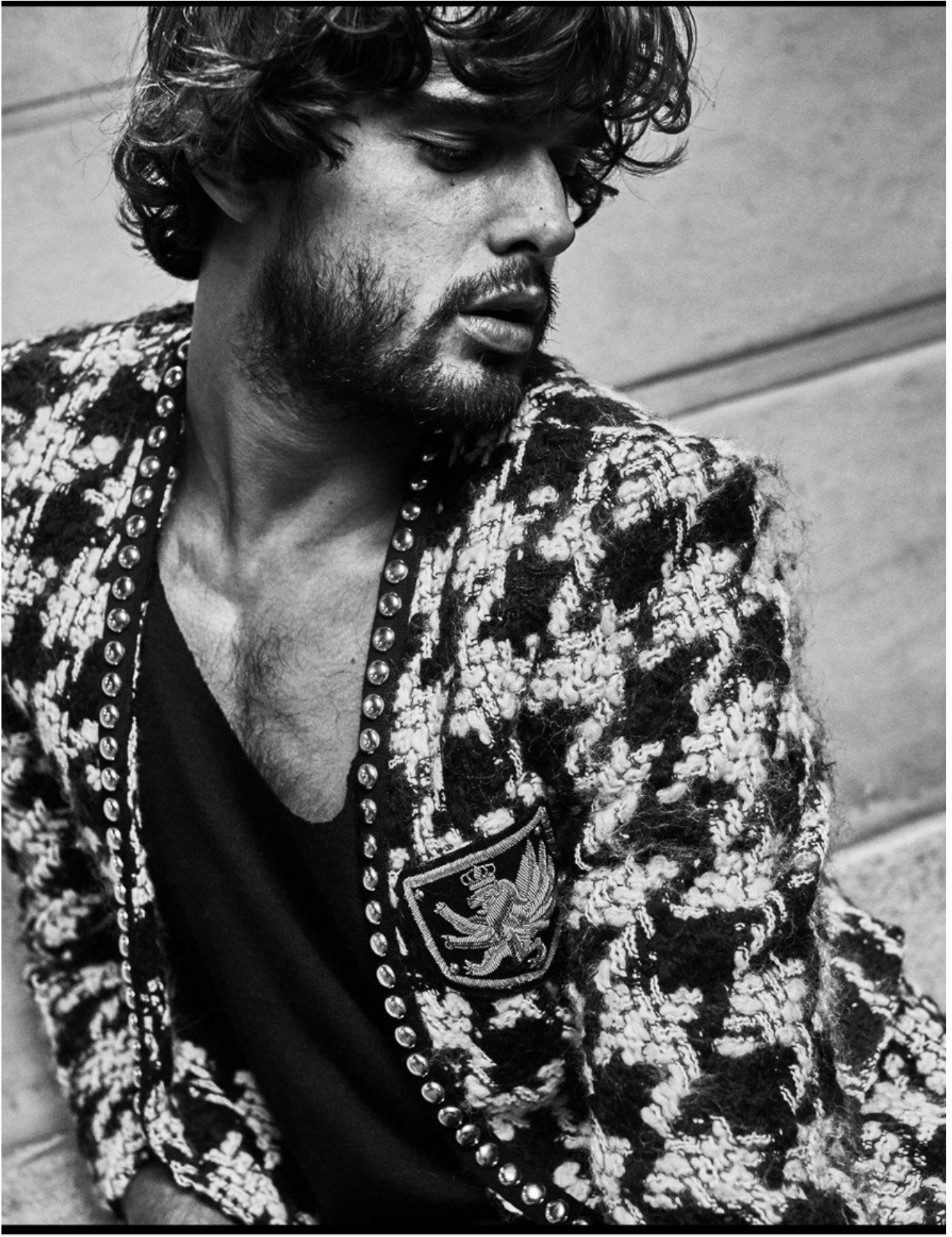
Stephanie
Silk pyjamas
Dolce & Gabbana
Lace bra La Perla
& Journelle

Marlon
Cotton
briefs Dolce &
Gabbana

HEIGHT 188 / 6'2" | CHEST 98 / 38.5 | WAIST 81 / 32 | HAIR BROWN | EYES BROWN | SHOES 44 / 10
SUIT 50 / 40 | COLLAR 40 / 16

kult
AUSTRALIA

MARLON TEIXEIRA



BALMAIN
PARIS

HEIGHT 188 / 6'2" | CHEST 98 / 38.5 | WAIST 81 / 32 | HAIR BROWN | EYES BROWN | SHOES 44 / 10
SUIT 50 / 40 | COLLAR 40 / 16

kult
AUSTRALIA

MARLON TEIXEIRA



BALMAIN
PARIS

HEIGHT 188 / 6'2" | CHEST 98 / 38.5 | WAIST 81 / 32 | HAIR BROWN | EYES BROWN | SHOES 44 / 10
SUIT 50 / 40 | COLLAR 40 / 16

kult
AUSTRALIA

MARLON TEIXEIRA



HEIGHT 188 / 6'2" | CHEST 98 / 38.5 | WAIST 81 / 32 | HAIR BROWN | EYES BROWN | SHOES 44 / 10
SUIT 50 / 40 | COLLAR 40 / 16

kult
AUSTRALIA

MARLON TEIXEIRA



HEIGHT 188 / 6'2" | CHEST 98 / 38.5 | WAIST 81 / 32 | HAIR BROWN | EYES BROWN | SHOES 44 / 10
SUIT 50 / 40 | COLLAR 40 / 16

kult
AUSTRALIA

MARLON TEIXEIRA



HEIGHT 188 / 6'2" | CHEST 98 / 38.5 | WAIST 81 / 32 | HAIR BROWN | EYES BROWN | SHOES 44 / 10
SUIT 50 / 40 | COLLAR 40 / 16

kult
AUSTRALIA

MARLON TEIXEIRA



HEIGHT 188 / 6'2" | CHEST 98 / 38.5 | WAIST 81 / 32 | HAIR BROWN | EYES BROWN | SHOES 44 / 10
SUIT 50 / 40 | COLLAR 40 / 16

kult
AUSTRALIA

MARLON TEIXEIRA



HEIGHT 188 / 6'2" | CHEST 98 / 38.5 | WAIST 81 / 32 | HAIR BROWN | EYES BROWN | SHOES 44 / 10
SUIT 50 / 40 | COLLAR 40 / 16

kult
AUSTRALIA

MARLON TEIXEIRA

Total look de MOSCHINO PV 17



HEIGHT 188 / 6'2" | CHEST 98 / 38.5 | WAIST 81 / 32 | HAIR BROWN | EYES BROWN | SHOES 44 / 10
SUIT 50 / 40 | COLLAR 40 / 16

kult
AUSTRALIA

MARLON TEIXEIRA

Suéter de punto DSQUARED2
Pantalones PRADA
Colgante de cuero CARL IVAR



HEIGHT 188 / 6'2" | CHEST 98 / 38.5 | WAIST 81 / 32 | HAIR BROWN | EYES BROWN | SHOES 44 / 10
SUIT 50 / 40 | COLLAR 40 / 16

kult
AUSTRALIA

MARLON TEIXEIRA

Pantalones de cuero BACKLASH
Colgante y accesorios BACKLASH



HEIGHT 188 / 6'2" | CHEST 98 / 38.5 | WAIST 81 / 32 | HAIR BROWN | EYES BROWN | SHOES 44 / 10
SUIT 50 / 40 | COLLAR 40 / 16

kult
AUSTRALIA

MARLON TEIXEIRA



HEIGHT 188 / 6'2" | CHEST 98 / 38.5 | WAIST 81 / 32 | HAIR BROWN | EYES BROWN | SHOES 44 / 10
SUIT 50 / 40 | COLLAR 40 / 16

kult
AUSTRALIA

MARLON TEIXEIRA



Total look de Balmain

HEIGHT 188 / 6'2" | CHEST 98 / 38.5 | WAIST 81 / 32 | HAIR BROWN | EYES BROWN | SHOES 44 / 10
SUIT 50 / 40 | COLLAR 40 / 16

kult
AUSTRALIA

MARLON TEIXEIRA



9 772234 125002
ISSN 2234-1250

**WE NEED TO
TALK ABOUT DENIM**

2013 F/W
SEOUL FASHION
WEEK

패션계의 뜨거운 남자, 100인
테라스에서 보내는 하루
화이트 스피릿의 모든 것
라프 시몬스 & 스틸링 루비

MODE
SHORTS
JET SET SUIT
+
이민기
주지훈
로버트 다우니 주니어

HEIGHT 188 / 6'2" | CHEST 98 / 38.5 | WAIST 81 / 32 | HAIR BROWN | EYES BROWN | SHOES 44 / 10
SUIT 50 / 40 | COLLAR 40 / 16

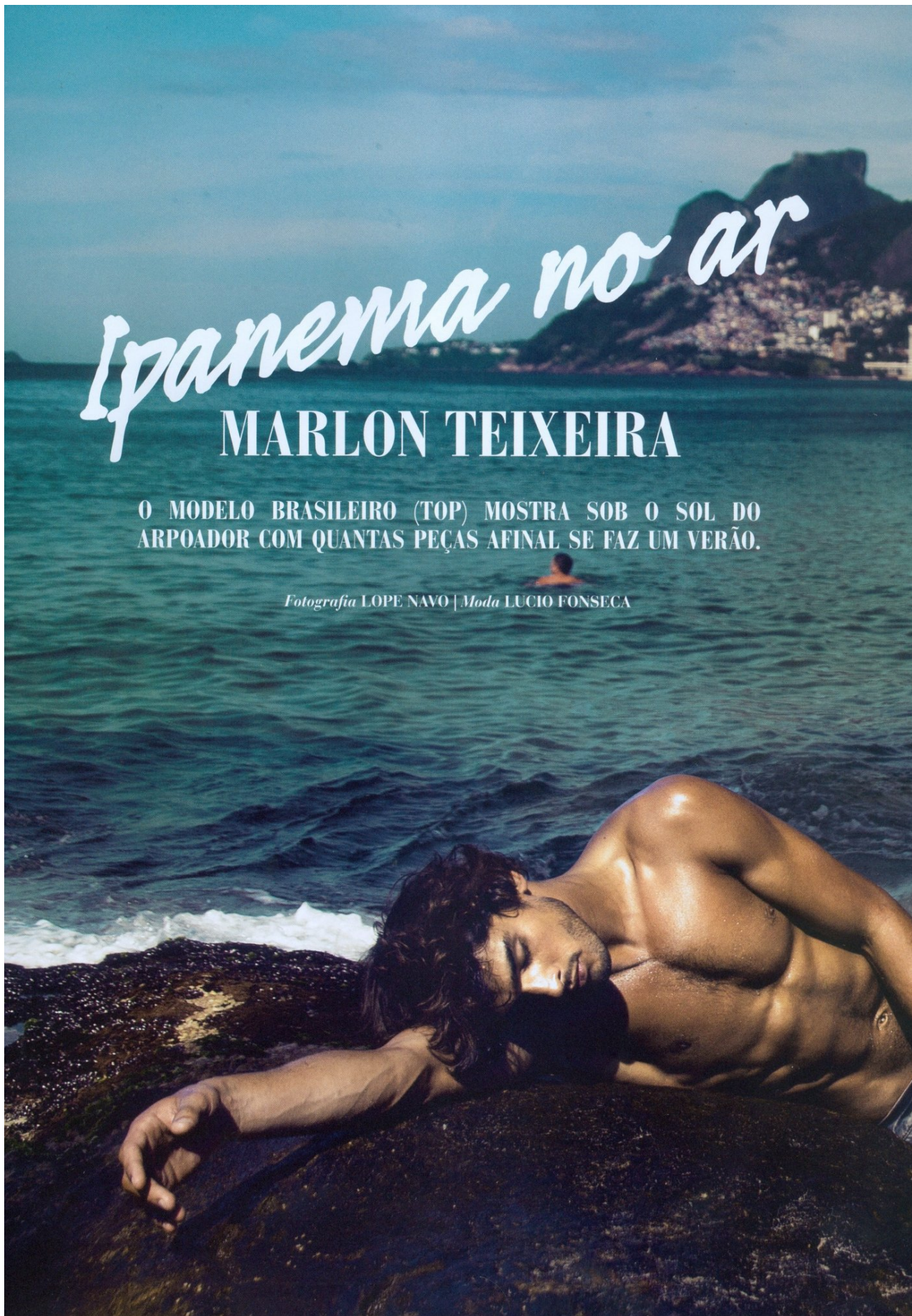
kult
AUSTRALIA

MARLON TEIXEIRA

Ipanema no ar
MARLON TEIXEIRA

O MODELO BRASILEIRO (TOP) MOSTRA SOB O SOL DO ARPOADOR COM QUANTAS PEÇAS AFINAL SE FAZ UM VERÃO.

Fotografia LOPE NAVO | Moda LUCIO FONSECA



HEIGHT 188 / 6'2" | CHEST 98 / 38.5 | WAIST 81 / 32 | HAIR BROWN | EYES BROWN | SHOES 44 / 10
SUIT 50 / 40 | COLLAR 40 / 16

kult
AUSTRALIA

MARLON TEIXEIRA



HEIGHT 188 / 6'2" | CHEST 98 / 38.5 | WAIST 81 / 32 | HAIR BROWN | EYES BROWN | SHOES 44 / 10
SUIT 50 / 40 | COLLAR 40 / 16

kult
AUSTRALIA

MARLON TEIXEIRA

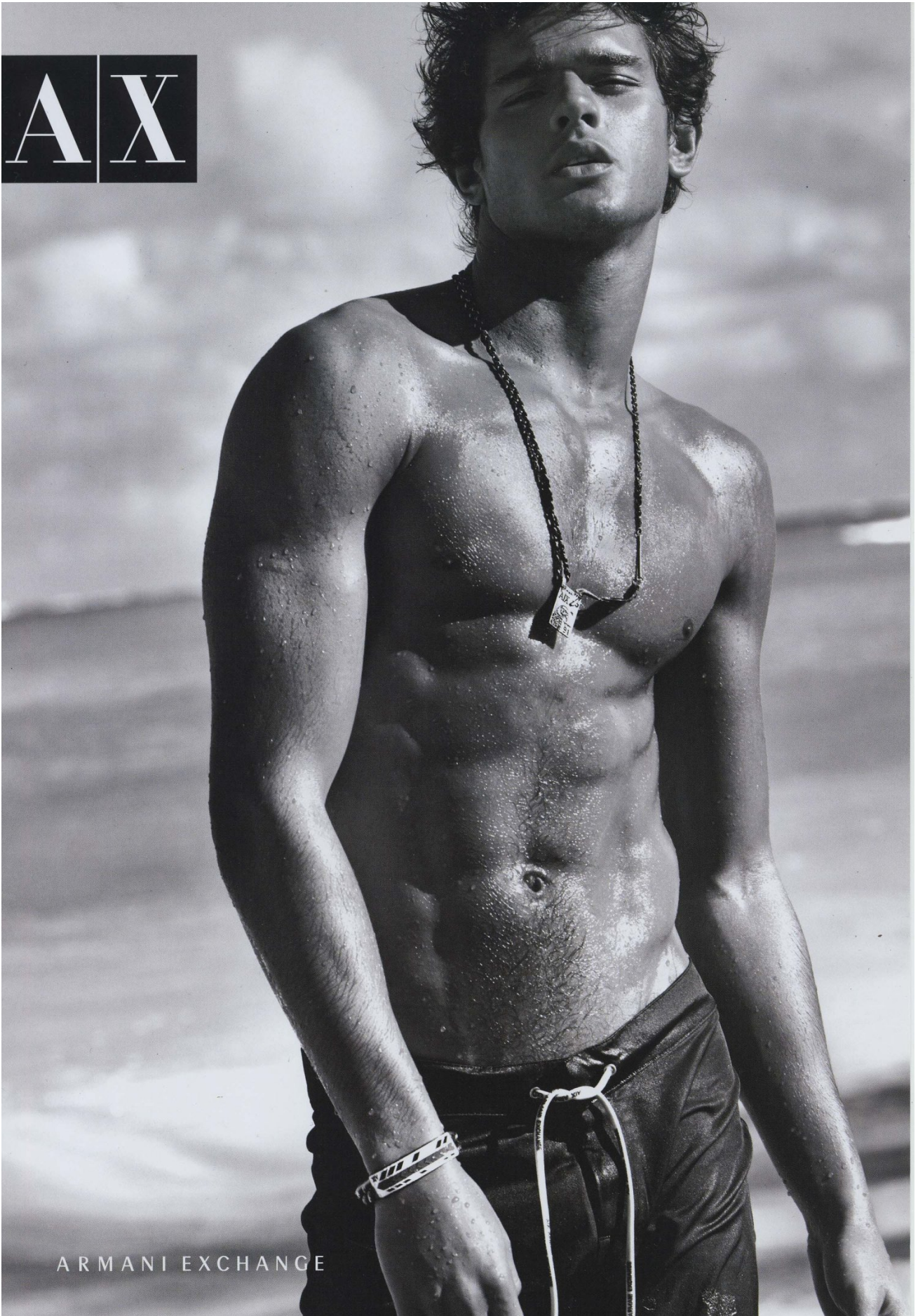


HEIGHT 188 / 6'2" | CHEST 98 / 38.5 | WAIST 81 / 32 | HAIR BROWN | EYES BROWN | SHOES 44 / 10
SUIT 50 / 40 | COLLAR 40 / 16

kult
AUSTRALIA

MARLON TEIXEIRA

AX



ARMANI EXCHANGE

HEIGHT 188 / 6'2" | CHEST 98 / 38.5 | WAIST 81 / 32 | HAIR BROWN | EYES BROWN | SHOES 44 / 10
SUIT 50 / 40 | COLLAR 40 / 16

kult
AUSTRALIA

MARLON TEIXEIRA



HEIGHT 188 / 6'2" | CHEST 98 / 38.5 | WAIST 81 / 32 | HAIR BROWN | EYES BROWN | SHOES 44 / 10
SUIT 50 / 40 | COLLAR 40 / 16

kult
AUSTRALIA

MARLON TEIXEIRA



HEIGHT 188 / 6'2" | CHEST 98 / 38.5 | WAIST 81 / 32 | HAIR BROWN | EYES BROWN | SHOES 44 / 10
SUIT 50 / 40 | COLLAR 40 / 16

kult
AUSTRALIA

MARLON TEIXEIRA



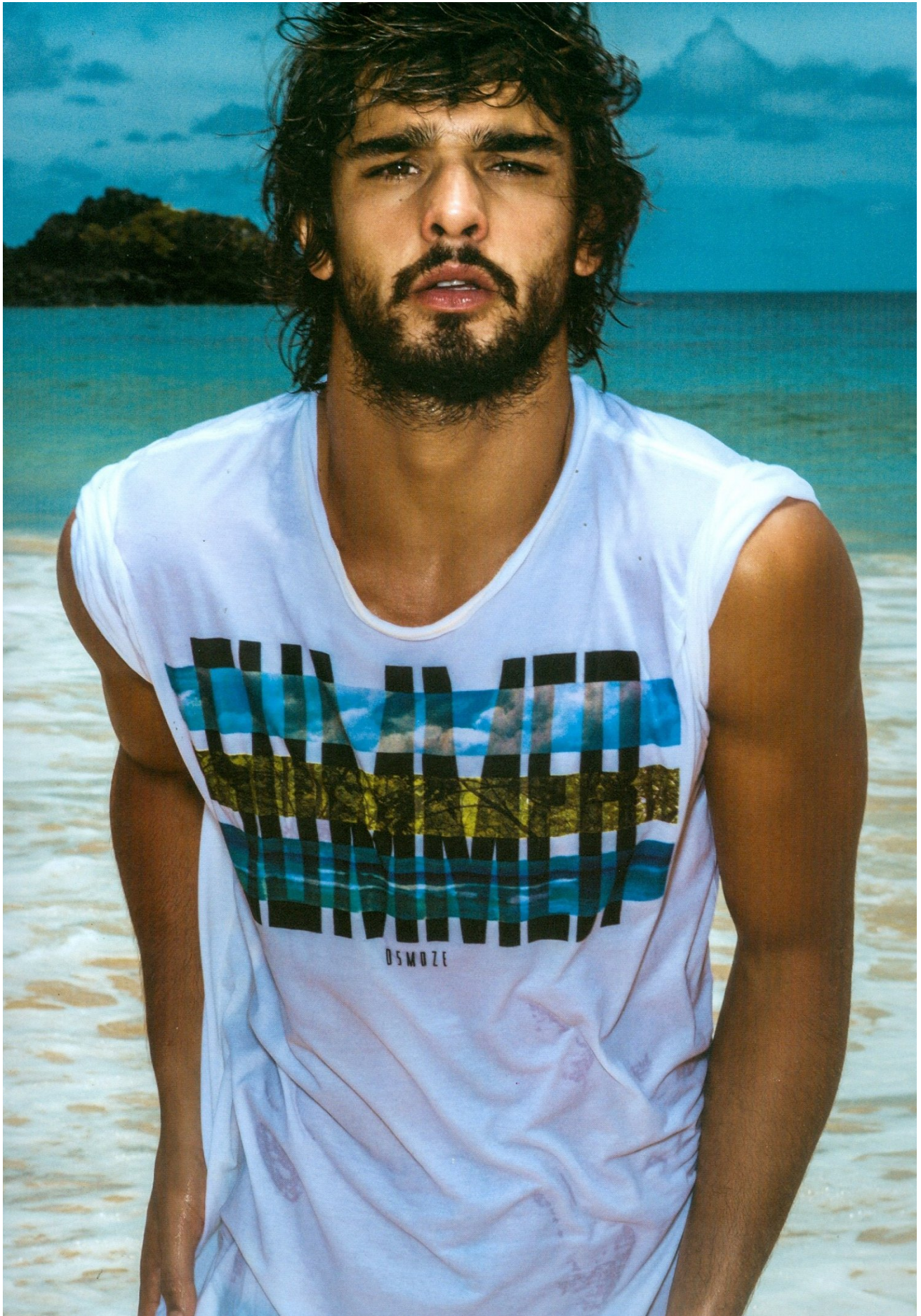
BLUSA DIESEL.
SUNGA OSKLEN.

Edição: Sunyoung Lee.
Beleza: Edilson Ferreira.

HEIGHT 188 / 6'2" | CHEST 98 / 38.5 | WAIST 81 / 32 | HAIR BROWN | EYES BROWN | SHOES 44 / 10
SUIT 50 / 40 | COLLAR 40 / 16

kult
AUSTRALIA

MARLON TEIXEIRA



HEIGHT 188 / 6'2" | CHEST 98 / 38.5 | WAIST 81 / 32 | HAIR BROWN | EYES BROWN | SHOES 44 / 10
SUIT 50 / 40 | COLLAR 40 / 16

kult
AUSTRALIA

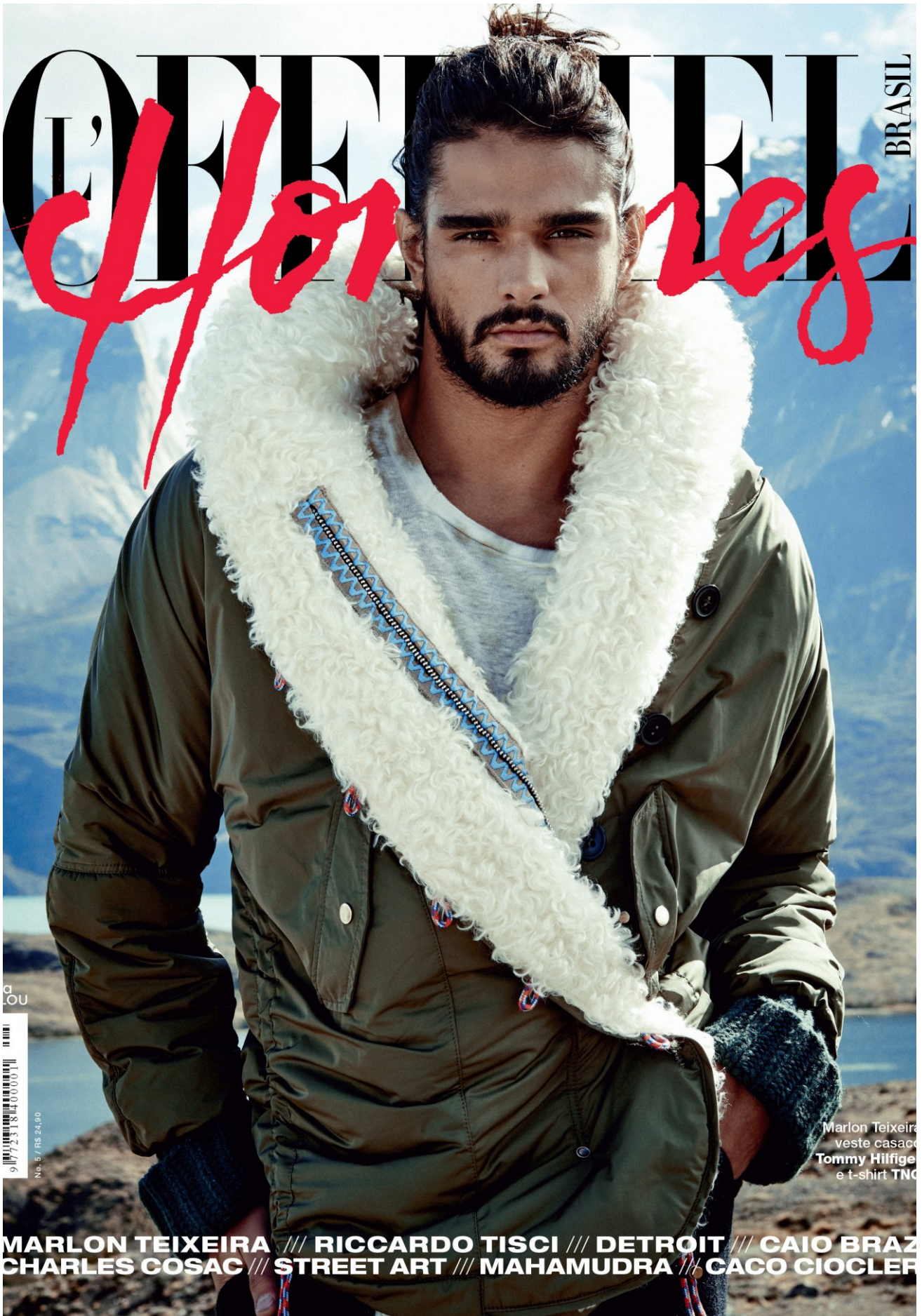
MARLON TEIXEIRA



HEIGHT 188 / 6'2" | CHEST 98 / 38.5 | WAIST 81 / 32 | HAIR BROWN | EYES BROWN | SHOES 44 / 10
SUIT 50 / 40 | COLLAR 40 / 16

kult
AUSTRALIA

MARLON TEIXEIRA



a
LOU



No. 5 / R\$ 24,90

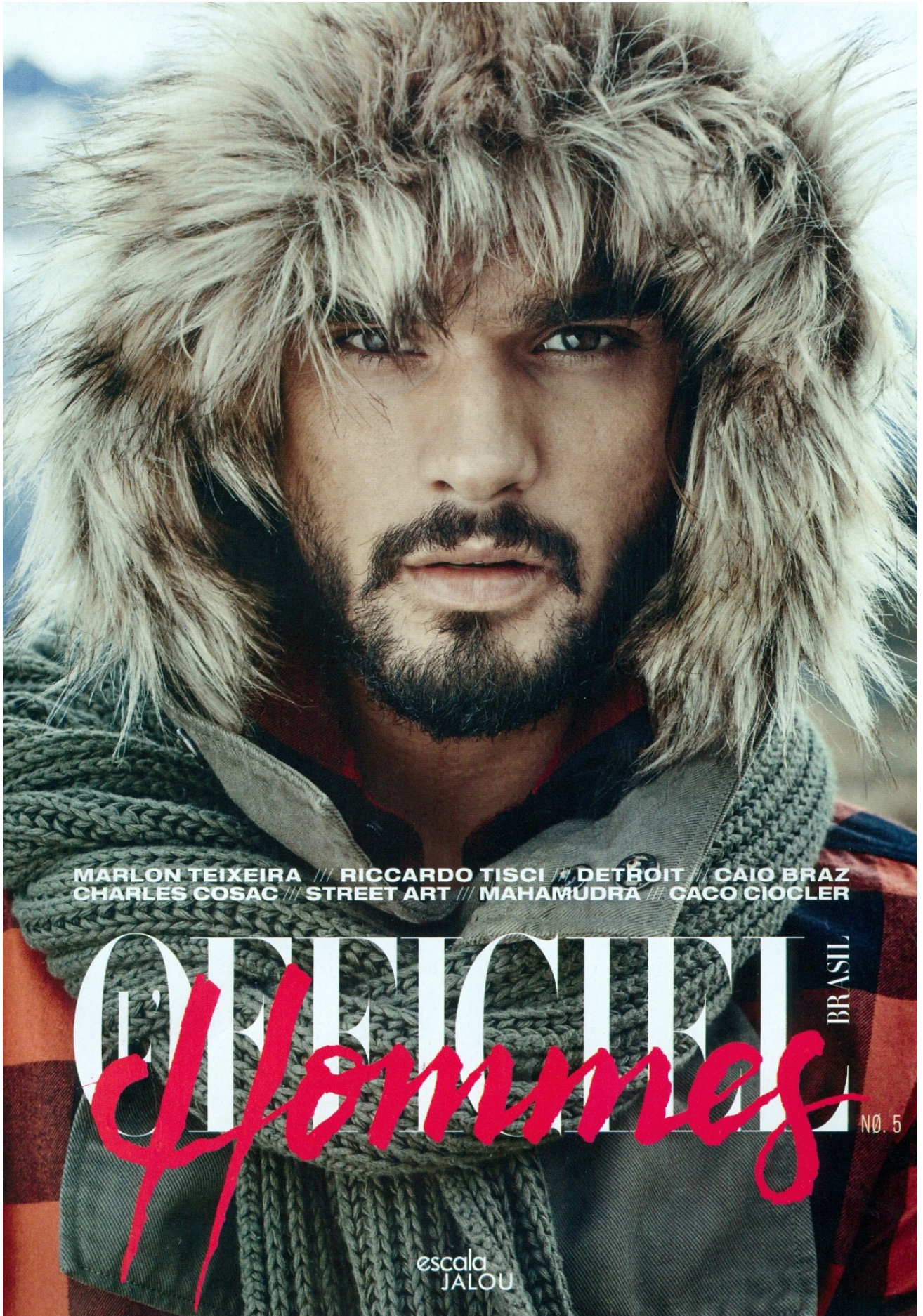
Marlon Teixeira
veste casaco
Tommy Hilfiger
e t-shirt TNC

MARLON TEIXEIRA /// RICCARDO TISCI /// DETROIT /// CAIO BRAZ
CHARLES COSAC /// STREET ART /// MAHAMUDRA /// GACO CIOCLER

HEIGHT 188 / 6'2" | CHEST 98 / 38.5 | WAIST 81 / 32 | HAIR BROWN | EYES BROWN | SHOES 44 / 10
SUIT 50 / 40 | COLLAR 40 / 16

kult
AUSTRALIA

MARLON TEIXEIRA



MARLON TEIXEIRA /// RICCARDO TISCI // DETROIT // CAIO BRAZ
CHARLES COSAC /// STREET ART /// MAHAMUDRA /// GAGO CIOCLER

OFFICIAL

Hommes

BRASIL

NO. 5

escala
JALOU

HEIGHT 188 / 6'2" | CHEST 98 / 38.5 | WAIST 81 / 32 | HAIR BROWN | EYES BROWN | SHOES 44 / 10
SUIT 50 / 40 | COLLAR 40 / 16

kult
AUSTRALIA

MARLON TEIXEIRA



ETRO

NEW YORK: 720 MADISON AVENUE – 89 GREENE STREET
BAL HARBOUR SHOPS - BEVERLY HILLS AT TWO RODEO - BUCKHEAD ATLANTA
SHOP ETRO.COM

HEIGHT 188 / 6'2" | CHEST 98 / 38.5 | WAIST 81 / 32 | HAIR BROWN | EYES BROWN | SHOES 44 / 10
SUIT 50 / 40 | COLLAR 40 / 16

kult
AUSTRALIA

MARLON TEIXEIRA



E T F O

HEIGHT 188 / 6'2" | CHEST 98 / 38.5 | WAIST 81 / 32 | HAIR BROWN | EYES BROWN | SHOES 44 / 10
SUIT 50 / 40 | COLLAR 40 / 16

kult
AUSTRALIA

MARLON TEIXEIRA



HEIGHT 188 / 6'2" | CHEST 98 / 38.5 | WAIST 81 / 32 | HAIR BROWN | EYES BROWN | SHOES 44 / 10
SUIT 50 / 40 | COLLAR 40 / 16

kult
AUSTRALIA

MARLON TEIXEIRA



HEIGHT 188 / 6'2" | CHEST 98 / 38.5 | WAIST 81 / 32 | HAIR BROWN | EYES BROWN | SHOES 44 / 10
SUIT 50 / 40 | COLLAR 40 / 16

kult
AUSTRALIA

MARLON TEIXEIRA



T-SHIRT E
CALÇA DOLCE &
GABBANA.

HEIGHT 188 / 6'2" | CHEST 98 / 38.5 | WAIST 81 / 32 | HAIR BROWN | EYES BROWN | SHOES 44 / 10
SUIT 50 / 40 | COLLAR 40 / 16

kult
AUSTRALIA

MARLON TEIXEIRA



HEIGHT 188 / 6'2" | CHEST 98 / 38.5 | WAIST 81 / 32 | HAIR BROWN | EYES BROWN | SHOES 44 / 10
SUIT 50 / 40 | COLLAR 40 / 16

kult
AUSTRALIA

MARLON TEIXEIRA

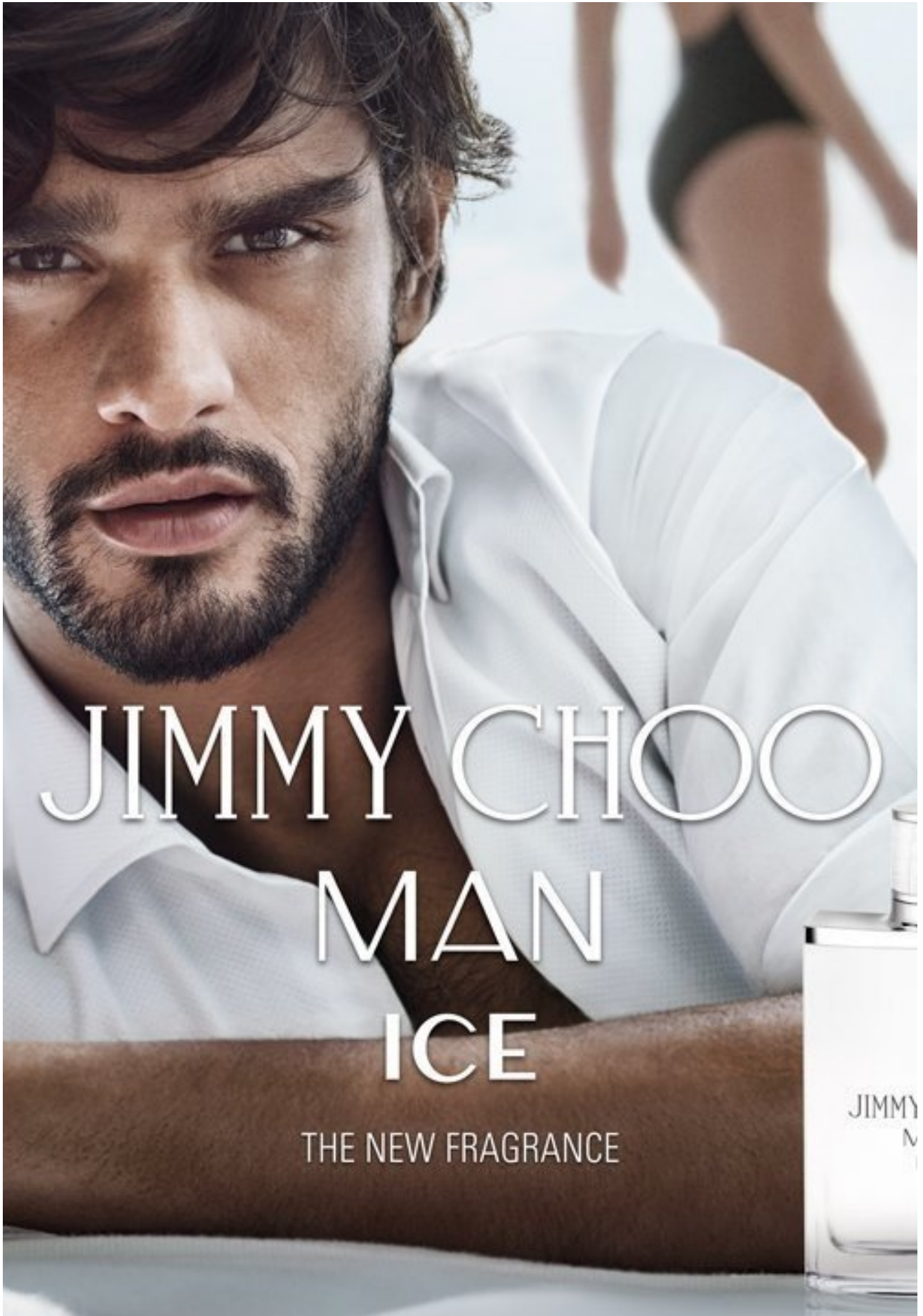
Justcavalli
THE NEW FRAGRANCE JUST FOR HER AND HIM

[f](#) JOIN JUST CAVALLI

HEIGHT 188 / 6'2" | CHEST 98 / 38.5 | WAIST 81 / 32 | HAIR BROWN | EYES BROWN | SHOES 44 / 10
SUIT 50 / 40 | COLLAR 40 / 16

kult
AUSTRALIA

MARLON TEIXEIRA



JIMMY CHOO
MAN
ICE

THE NEW FRAGRANCE

HEIGHT 188 / 6'2" | CHEST 98 / 38.5 | WAIST 81 / 32 | HAIR BROWN | EYES BROWN | SHOES 44 / 10
SUIT 50 / 40 | COLLAR 40 / 16

kult
AUSTRALIA

MARLON TEIXEIRA



HEIGHT 188 / 6'2" | CHEST 98 / 38.5 | WAIST 81 / 32 | HAIR BROWN | EYES BROWN | SHOES 44 / 10
SUIT 50 / 40 | COLLAR 40 / 16

kult
AUSTRALIA